



rainbowsystem.com

Rexair LLC | Troy, Michigan
© 2024 Rexair LLC | R17491A-1

The image features a solid blue background with a pattern of light blue circles of varying sizes. In the lower half, there are several white dotted lines that curve across the page. The text is positioned in the upper left quadrant.

rainbow
RAINJET®

OWNER'S MANUAL

Contact your local Authorized Rainbow Distributor for advice on caring for your RainJet, warranty coverage, replacement parts and service information.

YOUR AUTHORIZED RAINBOW DISTRIBUTOR

| | |
|-------------------|--|
| NAME | |
| ADDRESS | |
| CITY/STATE/POSTAL | |
| PHONE | |
| E-MAIL | |



2600 W. Big Beaver Road, Suite 555 | Troy, Michigan 48084 | USA | (248) 643-7222 | custserv@rexairllc.com | rainbowsystem.com

© 2024 Rexair LLC, all rights reserved. Rainbow®, SRX®, RainbowMate®, MiniJet®, JetPad®, RainMate®, RainJet®, AquaMate®, Rexair®, Hurricane®, The Power of Water®, Wet Dust Can't Fly® and the configuration of the Rainbow® Cleaning System are registered trademarks of Rexair LLC, Troy, Michigan, United States.

Important Safety Instructions



THIS SYMBOL MEANS 'CAUTION.'

When using an electrical appliance, basic precautions should always be followed, including the following:



THIS SYMBOL MEANS 'PLEASE READ ALL INSTRUCTIONS BEFORE USING THIS UNIT.'



THIS SYMBOL MEANS 'THIS IS A WATER-SUCTION CLEANING APPLIANCE FOR ASPIRATING AN AQUEOUS SOLUTION THAT MAY CONTAIN FOAMING DETERGENT.'

! WARNING: TO REDUCE RISK OF FIRE, ELECTRICAL SHOCK OR INJURY

1. Do not leave the RainJet when plugged in. Unplug from outlet when not in use and before servicing.
2. To reduce the risk of electrical shock, use indoors only.
3. To avoid risk of electrical shock and to reduce risk of fire, use only Rainbow cleaning products intended for use with the RainJet.
4. To avoid risk of electrical shock, use only the hose supplied with the Rainbow for wet pickup operations. See Rainbow owner's manual. Do not modify the electrified plug in any way.
5. The RainJet contains an electric motor and power cord. To avoid risk of electrical shock, DO NOT immerse the electric cord in water while filling or cleaning the tank.

! IMPORTANT

6. The RainJet tank is designed to use only Rainbow Clean Floor solution and clean, cold tap water. To avoid damage to the RainJet, do not place any of the following into the water tank:
 - Hot water or liquids
 - Commercially available cleaning liquids or compounds
7. Do not use on hardwood or laminate flooring.

8. Do not use the RainJet when the water tank is empty. This could result in damage to the pump.
9. Do not immerse Squeegee in liquids.
10. For further safety instructions, refer to Rainbow Owner's Manual.

Servicing of Double-Insulated Appliance

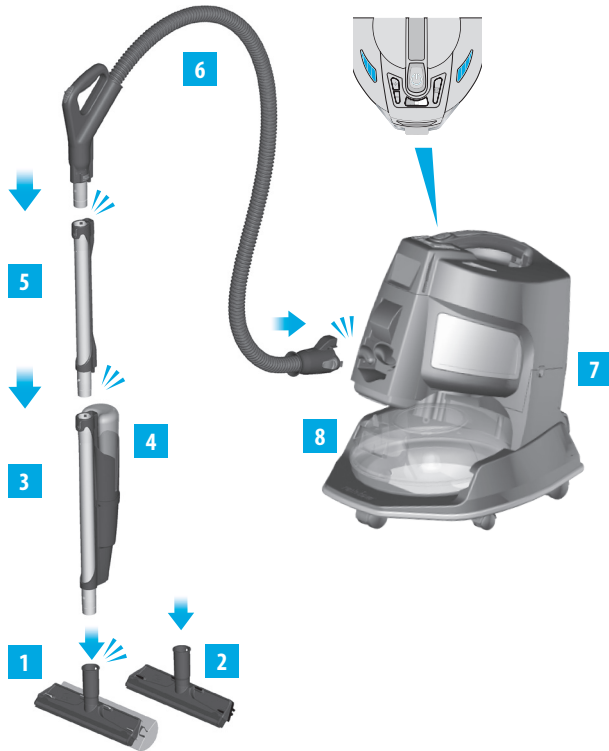
In a double-insulated appliance, two systems of insulation are provided instead of grounding. No grounding means is provided on a double-insulated appliance, nor should a means for grounding be added to the appliance. Servicing a double-insulated appliance requires extreme care and knowledge of the system and should be done only by qualified Rainbow service personnel. Replacement parts for a double-insulated appliance must be identical to the parts they replace. A double-insulated appliance is marked with the words "DOUBLE-INSULATION" or "DOUBLE-INSULATED." The Symbol (square within a square) may also be marked on the appliance. Any servicing other than cleaning should be performed by an Authorized Rainbow Distributor or Service Center.



SAVE THESE INSTRUCTIONS

THE RAINJET IS INTENDED FOR HOUSEHOLD USE ONLY.
USE THE RAINJET ONLY AS DIRECTED IN THIS OWNER'S MANUAL.
USE THE RAINJET WITH MODEL RHCS19 RAINBOW ONLY.

Get Acquainted With Your Rainjet®



1. Floor Squeegee & Sponge
2. Floor Squeegee & Brush
3. RainJet Body
4. RainJet Tank
5. Stainless Steel Wand*
6. Rainbow Hose*
7. Rainbow*
8. Rainbow Dolly & Water Basin*
9. Clean Floor Solution

*Not included



Storage & Maintenance

- Remove Squeegee head from wand. Rinse in warm water until clean.
- Remove excess remaining water from sponge by vacuuming the sponge with the Rainbow hose.
- Store and allow to dry.

Quick-Start Guide

1. Prepare The Floor...

- a. Use the Rainbow to vacuum the entire area to be cleaned, making sure there is no remaining debris on the surface.
- b. Empty and rinse the water basin. Do not refill.

2. Prepare The RainJet...

- a. Begin with an empty water basin. Attach the Rainbow and dolly. Attach the hose and wands.
- b. To soften sponge, dampen with water before using.
- c. Insert the bottom wand with male end into the opening located on top of the RainJet. Press downward until button lock clicks.
- d. Measure one capful of Rainbow Clean Floor solution and add to the RainJet tank.
- e. Fill the remainder of the RainJet tank with cool, clean tap water and secure the cap tightly.
- f. Insert the RainJet tank into the RainJet body until you hear it lock into place.

3. Clean...

- a. Turn the Rainbow on high mode.
- b. Squeeze the pistol trigger grip and apply solution to the floor. Use the sponge or brush to clean the floor with forward and backward movements.
- c. To pick up liquid, use the squeegee blade and pull backward.
- d. When finished cleaning, empty and rinse the water basin. Allow to dry.
- e. Rinse the RainJet tank with cool, clean tap water. Allow to dry.

Frequently Asked Questions

Is the RainJet safe to use on my floors?

The RainJet cleans the following types of floors: marble, stone, ceramic tiles, vinyl and linoleum. Do not use on unfinished, oiled or waxed wooden boards, unsealed tiles, or carpeted floors because they may be water-sensitive. If you have any doubts about the safety of Rainbow Clean Floor solution on your flooring, place a small amount of solution on a small, inconspicuous portion of the floor. When completely dry, check for a small white circle, which indicates the floor has a wax or oil finish and should not be cleaned with the RainJet. Remove the white circle by reapplying a small amount of wax finish and buffing. On floors periodically cleaned with wax or shine-enhancing products, the RainJet may remove the shine from the floor.

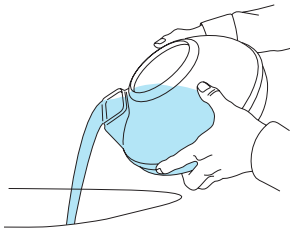
Is the RainJet safe to use around pets?

Yes, when using the recommended one capful, the Rainbow Clean Floor solution is not harmful to pets.

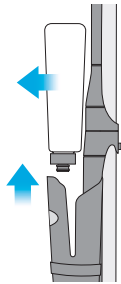
Where can I have my RainJet serviced or purchase extra Clean Floor solution?

This Rainbow appliance has been thoroughly tested and inspected. For service matters, or to purchase replacement parts or extra Clean Floor solution, please contact your local Authorized Rainbow Distributor. If you are unable to contact the Distributor from which you purchased the appliance, visit rainbowsystem.com to locate a nearby Authorized Rainbow Distributor.

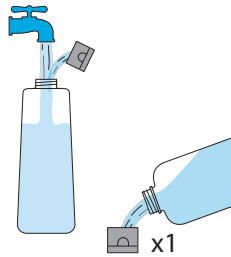
1



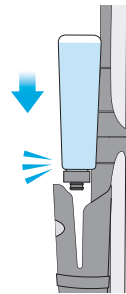
2



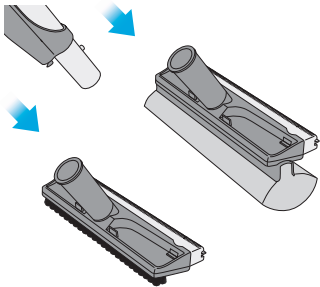
3



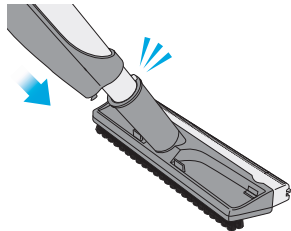
4



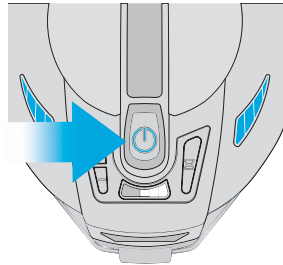
5



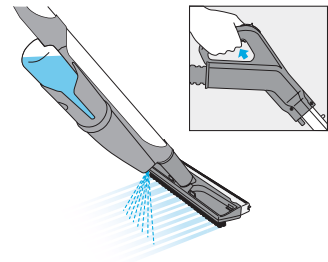
6



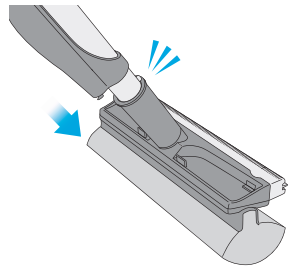
7



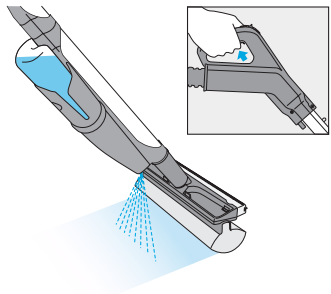
8



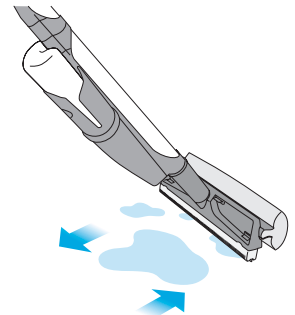
9



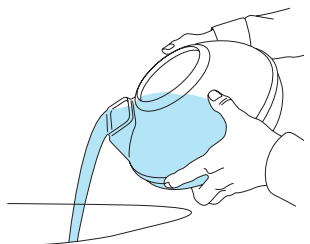
10



11



12



13



14

